

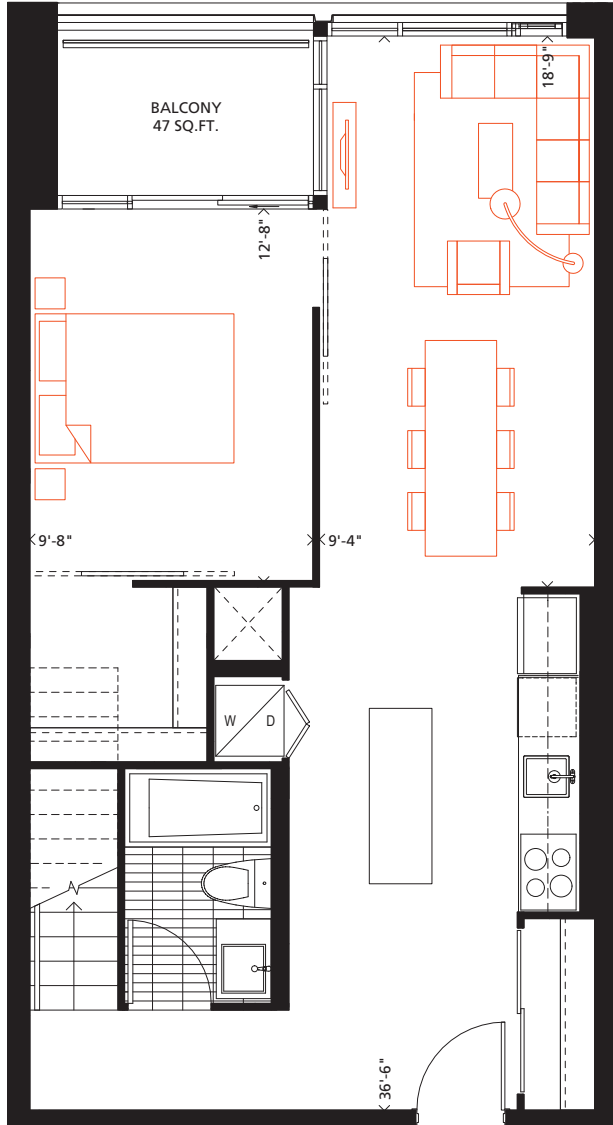
PH03

2 BEDROOM

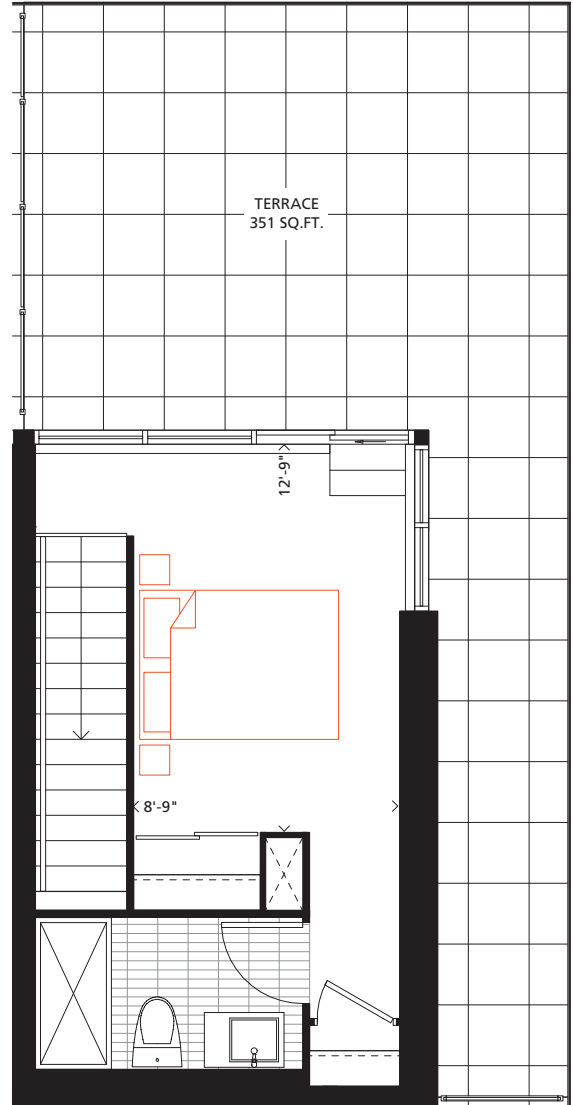
1,000 SQ.FT.

47 SQ.FT. Balcony, 351 SQ.FT. Terrace

PHASE 2



LOWER FLOOR



UPPER FLOOR

Gorsebrook

Bathroom tile format for illustrative purposes only. Actual bathroom tile format as per model suite. Furniture not included. Actual floor area may differ from stated floor area; see AP5 for details. All prices, sizes and specifications are subject to change without notice. E.&O.E

