

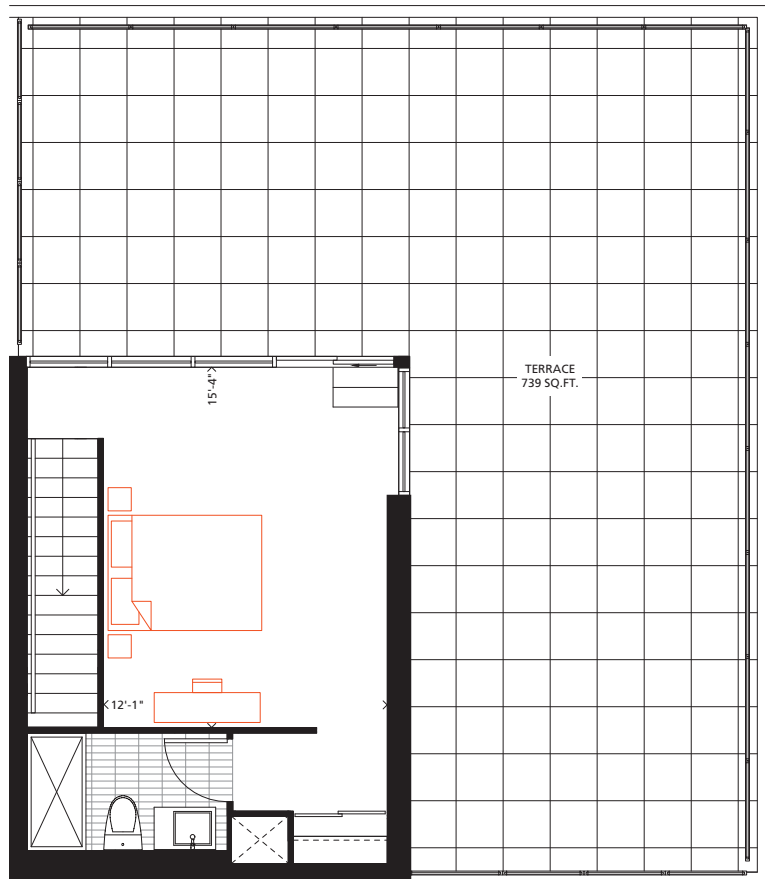
PH05

3 BEDROOM + DEN

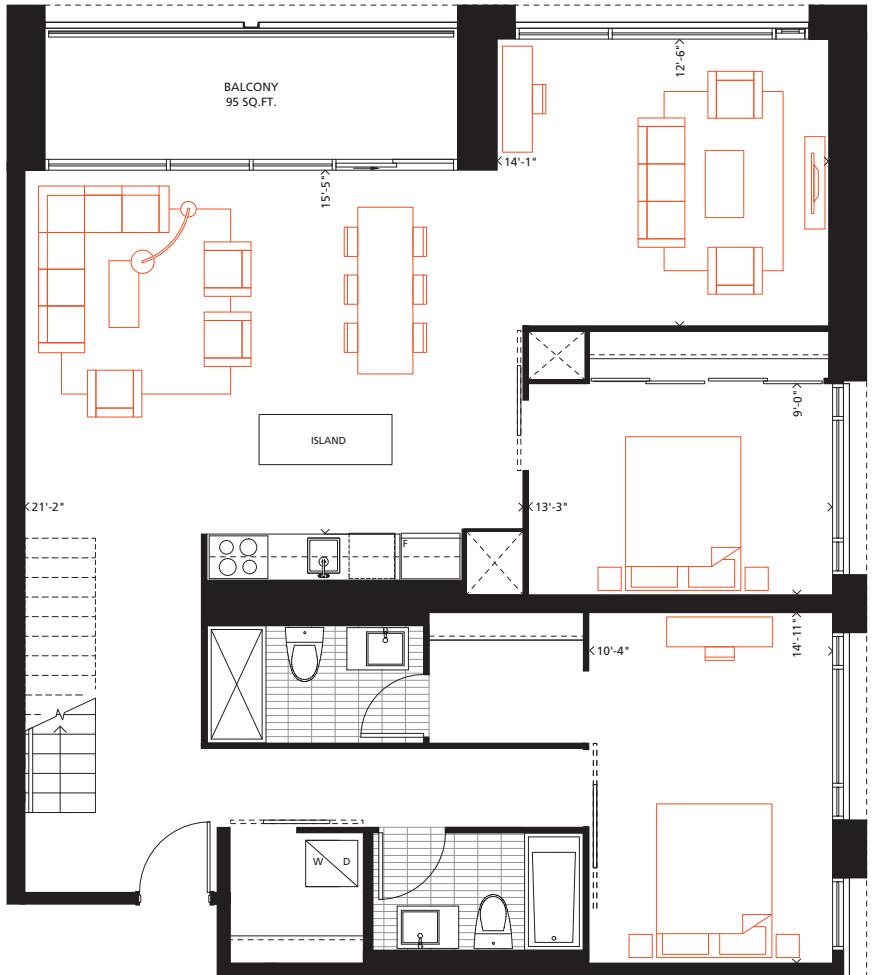
1,667 SQ.FT.

95 SQ.FT. Balcony, 739 SQ.FT. Terrace

PHASE 2



UPPER FLOOR



LOWER FLOOR



Gorsebrook

Bathroom tile format for illustrative purposes only. Actual bathroom tile format as per model suite. Furniture not included. Actual floor area may differ from stated floor area; see AP5 for details. All prices, sizes and specifications are subject to change without notice. E.&O.E