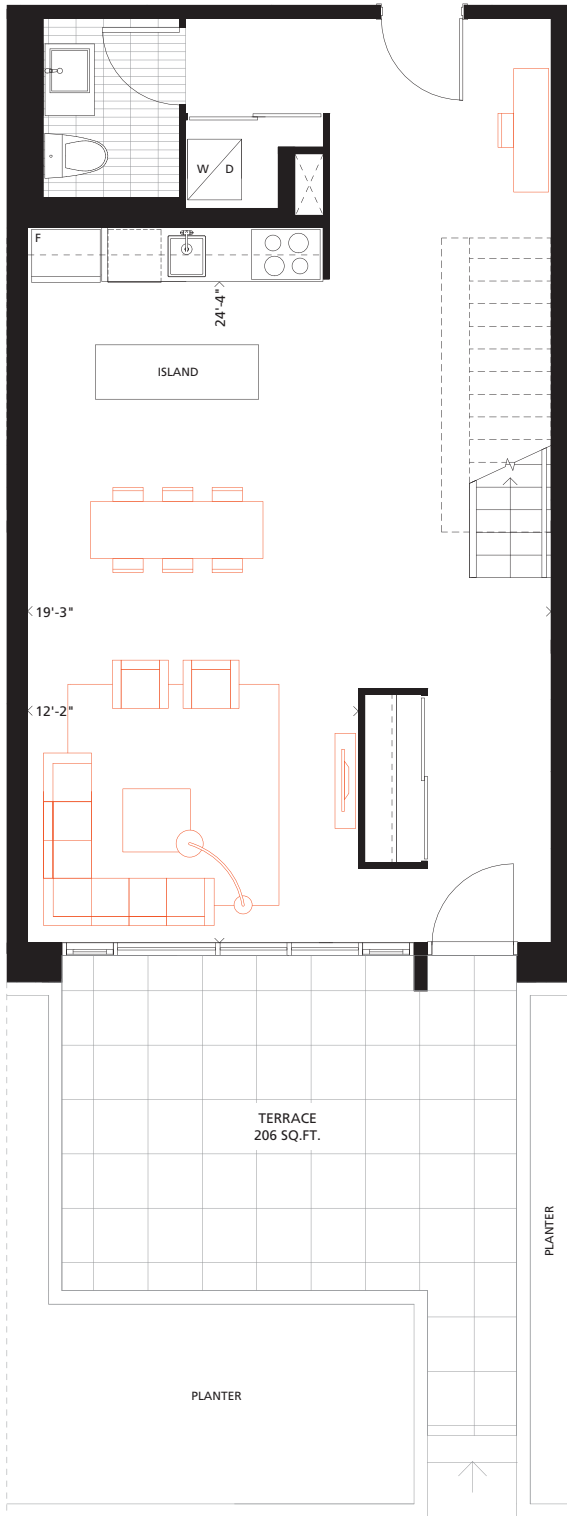


# TH11

3 BEDROOM  
**1,518 SQ.FT.**  
 206 SQ.FT. Terrace

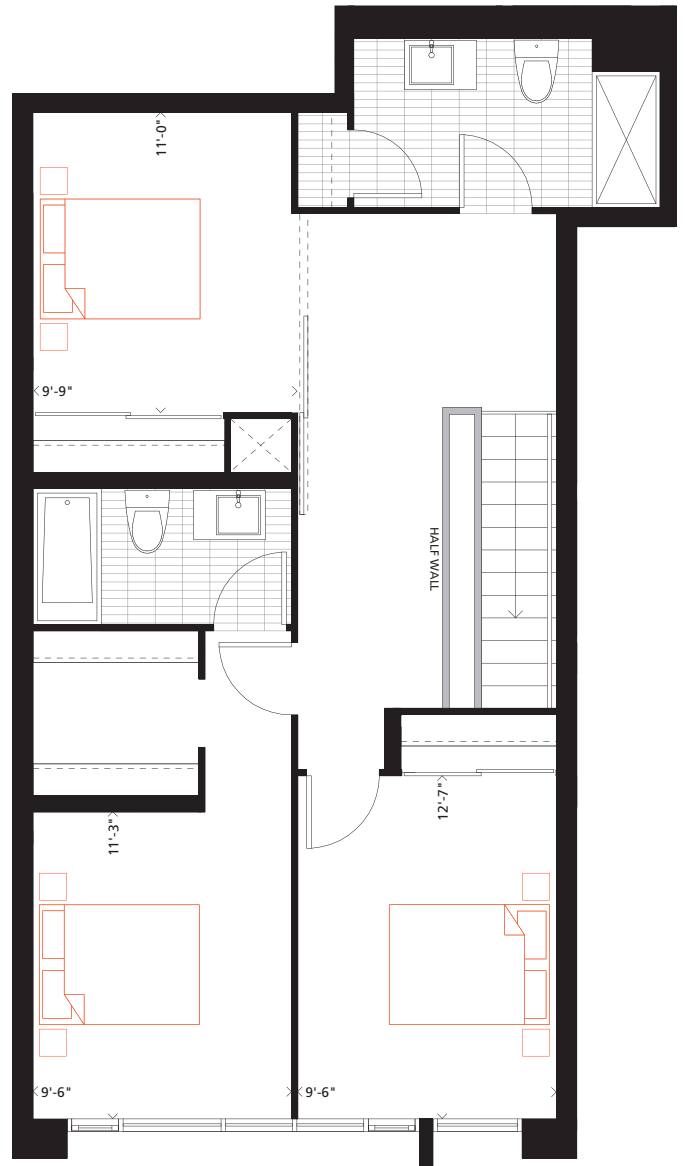
## PHASE 2



GROUND

*Gorsebrook*

Bathroom tile format for illustrative purposes only. Actual bathroom tile format as per model suite. Furniture not included. Actual floor area may differ from stated floor area; see AP5 for details. All prices, sizes and specifications are subject to change without notice. E.&O.E



LEVEL 2



GROUND FLOOR

FLOOR 2